

Coalition for the Upper South Platte (CUSP)

PO Box 726, 40 Cherokee AVE
Lake George, CO 80827
719-748-0033 (office)



Contract Administrator:

John C Geerdes, Executive Director

Coalition for the Upper South Platte (CUSP)
PO Box 726, 40 Cherokee AVE
Lake George, CO 80827
johngeerdes@cusp.ws
719-748-0033 office

Project Administrator:

Chris Fuller, Deputy Director

Coalition for the Upper South Platte (CUSP)
PO Box 726, 40 Cherokee AVE
Lake George, CO 80827
cusp@cusp.ws
719-748-0033 office

Project Manager:

Jason Looby, Natural Resource Specialist

USDA Forest Svc, South Park Ranger District
PO Box 219
Fairplay, CO 80440
Jason.Looby@usda.gov
719-225-3329

Project:

The primary purpose of this project is to improve parking areas for public use @ Happy Meadows.

.

Property Location:

Happy Meadows Campground is located three miles N of Lake George off CR77. Parking spurs are 20-30 feet with a maximum trailer length of 22 feet; elevation is 7,900 feet. Facilities include toilets, tables, water, and fire rings. The South Platte River is adjacent to CR 112 for fishing.

Contents:

Project Overview

Project Objectives

Project Timeline

Bid Approach

Property Description

Scope of Work

Schedule of Items

Bid Submittal Requirements
Selection Procedure and Criteria
Contractor Expectations
Appendices

Project Overview: All cut and fill quantities are estimated. Parking lot limits and material dump sites to be field staked by the Forest Service. See parking area Concept Drawings and Schedule of Items for estimated quantities and layout details.

Project Objectives:

Reduce sedimentation

Improve water quality & aquatic habitat

Redirect vehicular & foot traffic

Decrease Parking on County Road

Prepare vault sites for installation

Detailed descriptions for these objectives are listed in the Appendix 2.

Project Timeline:

RFP Release: Tuesday, March 14th, 2023

MANDATORY Show-Me-Tour: Tuesday, March 22, 2023 meet @ the first parking pull-out @ 10:00 am RSVP to Jason.Looby@USDA.gov

Bids Due: Wednesday, March 29, 2023 @ 5:00 pm

Bid Approach:

The contractor will bid based on their determination of the most effective and cost-efficient strategy for implementing construction for the project as a whole.

Property Description:

The Happy Meadows Corridor is located on the Pike National Forest along CR 112 and incorporates a three-mile section of the South Platte River. The area attracts thousands of recreationists annually that utilize the riparian corridor to enjoy fishing, tubing, and picnicking. Over the last decade this recreation has resulted in unauthorized motor vehicle use right on the river's edge. This has degraded the riverbank and caused extensive erosion. Several parking areas exist on the ground that have large ruts and severe water damage. Sanitation has also become a growing issue with the absence of any restroom facilities.

In 2022, the South Park Ranger District in partnership with CUSP took action to address this growing problem by implementing the Happy Meadows Management Project. Barriers were installed to prevent motor vehicles from driving on the riverbank and an additional parking area was constructed. Additional action is still needed and is outlined in the Scope of work.

Scope of Work:

CUSP, in cooperation with the US Forest Service, proposes to improve parking pullouts and trailheads near the South Platte River in the Happy Meadows corridor. This road segment is two miles north of Lake George, CO. The primary purpose of this project is to improve parking areas for public. The purpose of this document is to lay out scope of work for the parking improvements. All cut and fill quantities are estimated. Parking lot limits and material dump sites

to be field staked by the Forest Service. See parking area Concept Drawings and Schedule of Items for estimated quantities and layout details.

Parking Area 1 - Convert lot to 3 parallel parking stalls and pull-through

- Place geogrid in base of existing muddy area
- Fill mud hole with material excavated from Parking Area 5
- Place 6" aggregate surfacing lift
- Minimum 2% slope away from County Road
- Wheel rolling compaction in 6" lifts

Parking Area Example

- This lot has already been completed and can be used as an example for contractors to view desired finished product
- Install 15 concrete curb stops

Parking Area 2 - Expand area to fit 10 parking stalls

- Clear and grub to proposed boundaries
- Place geogrid throughout parking lot footprint
- Place 1 foot lift suitable material from Parking Area 5 over newly disturbed area.
- Place 6 inch lift suitable material from Parking Area 5 over existing disturbed area
- Place 6" aggregate surfacing lift
- Elevate parking area to road grade with 2% sloping away from road
- Wheel rolling compaction in 6" lifts
- Install 10 concrete curb stops

Parking Area 3 – Create new area to fit 20 parking stalls

- Organized parking with vegetated buffer along the road
- Clear and grub to proposed boundaries
- Place geogrid throughout parking lot footprint
- Place 1 foot lift suitable material from Parking Area 5
- Place 6" aggregate surfacing lift
- Wheel rolling compaction in 6" lifts
- Install 20 concrete curb stops
- Minimum 2% slope away from County Road

Parking Area 4 – Place fill and define parking area to fit 20 parking stalls

- Clear and grub to proposed boundaries
- Use remaining suitable material from Parking Area 5 to level out Parking Area 4 with minimum 2% slope away from County Road
- Place 6" aggregate surfacing lift
- Wheel rolling compaction in 6" lifts
- Install 20 concrete curb stops

Parking Area 5 - Create new area to fit 20 parking stalls and level area for future placement of CXT toilet

- Organized parking with vegetated buffer along the road
- Clear and grub to proposed boundaries

- Excavated material to be loaded and hauled to other parking areas as fill
- Excavate drainage swale around CXT location
- Install 20 concrete curb stops
- 6” aggregate surfacing lift with wheel roll compaction

General Noes

- All native vegetation within construction limits shall be cleared and grubbed prior to material placement as shown on the drawings.
- Haul organic clear and grub materials to waste areas specified (max 10 mile haul) if not used on backslopes or fill slopes immediately adjacent to parking areas.

Submittals

- Geogrid
- Concrete curb stop shop drawings or product info
- Class 6 aggregate base gradation

Work on Federal holidays is prohibited.

No night work will be allowed.

In addition to the above, work shall not be performed during the following periods for reasons of public safety:

Memorial Day - No work to be performed between May 26 – May 30

4th of July – No work to be performed between June 30 – July 7

Labor Day – No work to be performed between September 1 - September 5

Provide a minimum 48 hours’ notice to the Project Manager prior to inspection in field.

Schedule of Items:

SCHEDULE OF ITEMS						
PROJECT TITLE:					DATE:	
Happy Meadows Parking Project					17-Feb-23	
Entire Job						
ITEM	DESCRIPTION	METHOD OF MEASURE	UNIT	ESTIMATED QUANTITY	UNIT PRICE	TOTAL
151(01)	Mobilization	L.S.Q.	LUMP SUM	JOB		
Parking Area 1						
ITEM	DESCRIPTION	METHOD OF MEASURE	UNIT	ESTIMATED QUANTITY	UNIT PRICE	TOTAL

201(03)	Clearing & Grubbing, Disposal method scattering remove excess to dump locations designated by COR (10 mile haul max)	SQYD	SQYD	65		
204(19)	Embankment Construction	CY	CUBIC YARD	30		
207(03)	Geogrid	SQYD	SQYD	65		
301(01C)	Aggregate base, CDOT Class 6, Compaction method "A" Spreading and hauling equipment	TON	TON	55		
TOTAL AREA 1:						
Parking Area Example						
ITEM	DESCRIPTION	METHOD OF MEASURE	UNIT	ESTIMATED QUANTITY	UNIT PRICE	TOTAL
646(03)	Concrete Curb Stop Installation	L.S.Q.	EACH	15		
TOTAL EXAMPLE AREA:						
Parking Area 2						
ITEM	DESCRIPTION	METHOD OF MEASURE	UNIT	ESTIMATED QUANTITY	UNIT PRICE	TOTAL
201(03)	Clearing & Grubbing, Disposal method scattering remove excess to dump locations designated by COR (10 mile haul max)	SQYD	SQYD	95		
204(19)	Embankment Construction	CY	CUBIC YARD	125		
207(03)	Geogrid	SQYD	SQYD	95		
301(01C)	Aggregate base, CDOT Class 6, Compaction method "A" Spreading and hauling equipment	TON	TON	90		
646(03)	Concrete Curb Stop Installation	EA	EACH	10		
TOTAL AREA 2:						
Parking Area 3						
ITEM	DESCRIPTION	METHOD OF MEASURE	UNIT	ESTIMATED QUANTITY	UNIT PRICE	TOTAL
201(03)	Clearing & Grubbing, Disposal method scattering remove excess to dump locations designated by COR (10 mile haul max)	SQYD	SQYD	955		

204(19)	Embankment Construction	CY	CUBIC YARD	318		
207(03)	Geogrid	SQYD	SQYD	955		
301(01C)	Aggregate base, CDOT Class 6, Compaction method "A" Spreading and hauling equipment	TON	TON	180		
646(03)	Concrete Curb Stop Installation	EA	EACH	20		
TOTAL AREA 3:						
Parking Area 4						
ITEM	DESCRIPTION	METHOD OF MEASURE	UNIT	ESTIMATED QUANTITY	UNIT PRICE	TOTAL
201(03)	Clearing & Grubbing, Disposal method scattering remove excess to dump locations designated by COR (10 mile haul max)	SQYD	SQYD	250		
204(19)	Embankment Construction	CY	CUBIC YARD	625		
301(01C)	Aggregate base, CDOT Class 6, Compaction method "A" Spreading and hauling equipment	TON	TON	230		
646(03)	Concrete Curb Stop Installation	EA	EACH	20		
TOTAL AREA 4:						
Parking Area 5						
ITEM	DESCRIPTION	METHOD OF MEASURE	UNIT	ESTIMATED QUANTITY	UNIT PRICE	TOTAL
201(03)	Clearing & Grubbing, Disposal method scattering remove excess to dump locations designated by COR (10 mile haul max)	SQYD	SQYD	1250		
204(01)	Roadway Excavation, Load and Haul to parking lots 1, 2, 3, and 4 for Embankment Construction	CY	CUBIC YARD	1098		
301(01C)	Aggregate base, CDOT Class 6, Compaction method "A" Spreading and hauling equipment	TON	TON	200		
646(03)	Concrete Curb Stop Installation	EA	EACH	20		
TOTAL AREA 5:						
TOTAL ALL ITEMS:						

Bid Submittal Requirements:

1. Contractor Contact information.
 - a. Name
 - b. Phone
 - c. Email
 - d. Address
 - e. Website
2. Proposal Summary- Narrative discussing points mentioned below in the Selection
3. Procedure and Criteria
 - a. Familiarity with project area and scope
 - b. Work experience – Relevant past performance/projects
 - c. Track record – Reference list with client contact names, addresses, phone numbers, email addresses
 - d. Key Personnel list w/titles and their intended role in the project
4. Budget – Total Project Cost
5. Equipment which will be used to complete the project
6. Insurance Declaration meeting the minimum coverages
7. Timeline for completion

Complete and timely submittal of all required proposal documents is required for the proposal to be considered.

Selection Procedure and Criteria:

Bids for the project described herein will be evaluated on the following basis:

1. Contractor's familiarity with the project area, project scope and work experience
2. Track record of delivering successful projects which are similar in scope (references)
3. CUSP/USFS confidence in the contractor's ability to implement the proposed work effectively and with high quality outcomes (combination of experience and references)
4. Price
5. Equipment suitability

Bids will be weighed against these criteria, as opposed to simply accepting the lowest bid. Budget is only one factor that will be considered in awarding the contract for this project. In the event that all proposals significantly exceed the project budget, we will use other criteria in selecting a contractor who is willing to downscale the project scope to fit the budget. CUSP retains all rights to refuse any and all bids for any reason.

Contractor Expectations:

1. Carry liability insurance as required in Appendix 1
2. Work with CUSP and USFS to finalize project implementation plan and schedule
3. Implement according to plan by completing work within the allotted time frame and budget
4. Contractor will follow BMPs established by the USDA Forest Service found at <https://www.fs.usda.gov/naturalresources/watershed/bmp.shtml>

BIDS MUST BE EMAILED OR HAND DELIVERED TO:

1. EMAIL

cusp@cusp.ws

2. OFFICE LOCATION (please call before coming)

40 Cherokee AVE, Lake George, CO 80827
719-748-0033

Pre-Bid Site Visit

It is mandatory that you attend the Show-Me tour. Please RSVP to Jason Looby,
Jason.Looby@usda.gov

Appendices

Appendix 1

Liability Insurance Requirements

During the entire term of Project, the CONTRACTOR shall maintain, at its own expense, insurance in at least the following minimum amounts and classifications:

Workers' Compensation/ Employer's Liability

Not less than that required by statute

Comprehensive General Liability (including blanket contractual liability insurance):

Bodily Injury	\$ 500,000 each person; \$1,000,000 each occurrence
Property damage	\$ 600,000
General aggregate	\$ 2,000,000

Comprehensive Automobile Liability

Bodily Injury	\$ 500,000 each person; \$1,000,000 each occurrence
Property damage	\$ 600,000

The CONTRACTOR shall furnish certificates of such insurance to CUSP representative prior to performance of any agreement. CUSP and any managing partners shall be named as an additional insured on all policies of liability insurance.

CONTRACTOR understands that no such insurance will be provided by CUSP or project management partners.

Appendix 2

Indemnification Statement

CONTRACTOR agrees to protect, defend, indemnify and hold harmless CUSP, its divisions, boards, USDA Forest Service and each of their officers, officials, employees, representatives, agents, successors and assigns against any and all losses, penalties, injuries, claims, fines, legal actions, damages, settlements, costs, charges, professional fees, attorney's fees or other expenses or liabilities of every kind and character incurred by said listed parties and/or arising out of or

relating to any and all claims, liens, demands, obligations, actions, proceedings, or causes of action of every kind and character, in connection with, or arising directly or indirectly out of CONTRACTOR's negligence, intentional act, professional error, mistake, omission, performance or failure to perform and/or default or breach under the terms of this Agreement, or fault of CONTRACTOR during the performance of this Agreement. Without limiting the generality of this Section, in any and all such claims or actions relating to personal injury, or of any other tangible or intangible personal or property right, or actual or alleged violation of any applicable statute, ordinance, administrative order or directive, order, rule or regulation, CONTRACTOR shall respond to and defend any such claims or actions at its sole expense with counsel approved by CUSP and agrees to bear all other costs and expense related thereto, and attorney's fees, even if such claim is groundless, false or fraudulent.

Appendix 3

Location Maps



Parking lot 2



3/11/2023

World Imagery

High Resolution 60cm Imagery

Citations

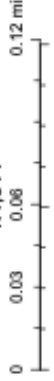
Low Resolution 15m Imagery

High Resolution 30cm Imagery

1.2m Resolution Metadata



1:4,514



Esri Community Maps Contributors, © OpenStreetMap, Microsoft, Esri, HERE, Garmin, SwireGraph, GeoTechnology, Inc., METI/NASA, USGS.

Parking lot 3



3/11/2023

World Imagery

High Resolution 60cm Imagery

Citations

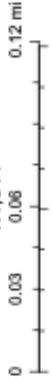
Low Resolution 15m Imagery

High Resolution 30cm Imagery

1.2m Resolution Metadata



1:4,514



Esri Community Maps Contributors, © OpenStreetMap contributors, Esri, HERE, Garmin, SwireGraph, GeoTechnology, Inc., METI/NASA, USGS,

Parking lots 4&5



3/11/2023

World Imagery

Low Resolution 15m Imagery

High Resolution 60cm Imagery

High Resolution 30cm Imagery

Citations

1.2m Resolution Metadata



1:4,514

0 0.03 0.06 0.12 mi
0 0.05 0.1 0.19 km

Esri Community Maps Contributors, © OpenStreetMap, Microsoft, Esri, HERE, Garmin, SwireGraph, GeoTechnology, Inc., METI/NASA, USGS.

Appendix 4
Concept Plans





United States Department of Agriculture
Forest Service

(R02)
ROCKY MOUNTAIN REGION

PROJECT NAME
HAPPY MEADOWS
PARKING PROJECT

PIKE AND SAN ISABEL
NATIONAL FORESTS

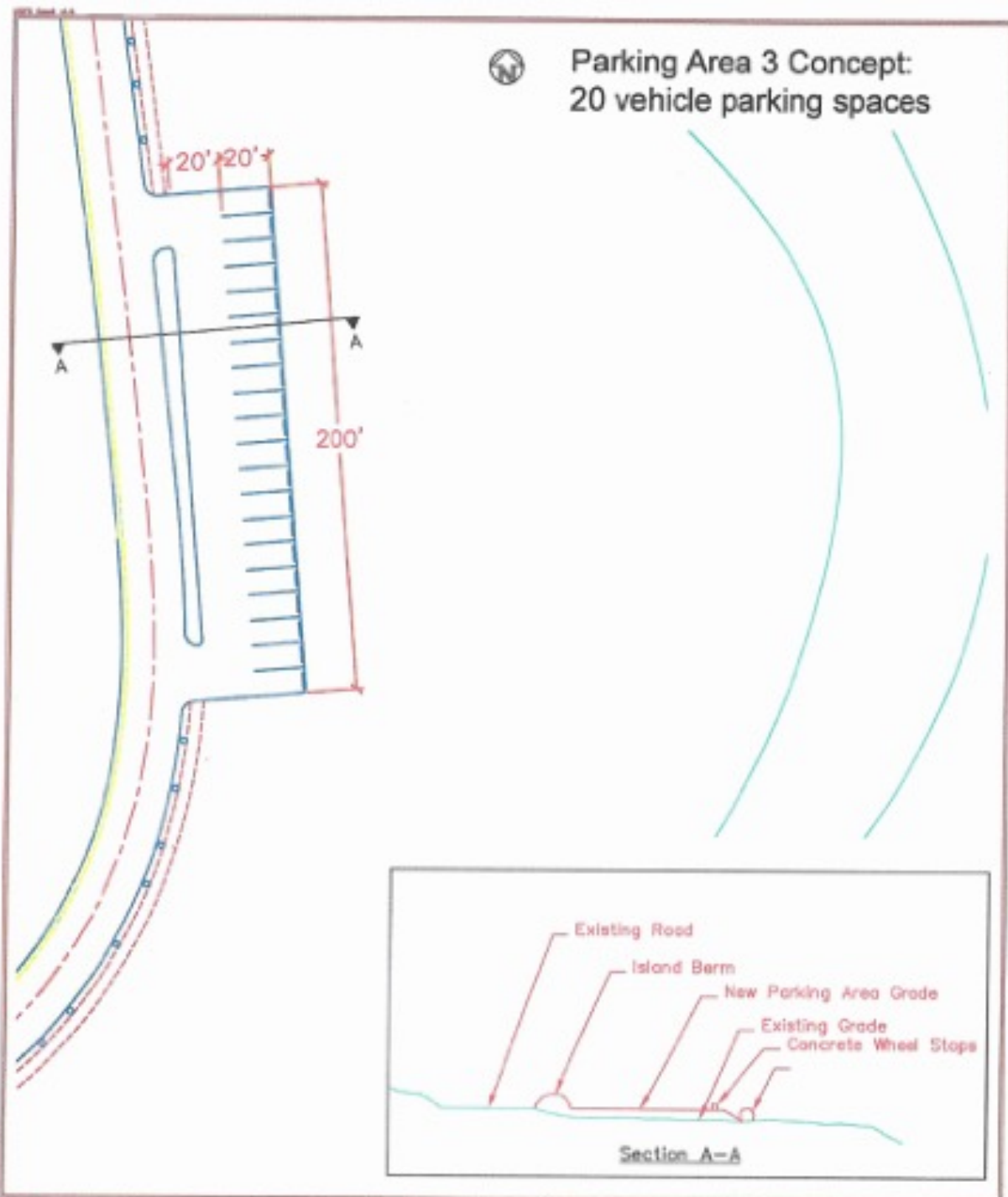
SOUTH PARK SANGER
DISTRICT

DRAWING TITLE
PARKING AREA 2
CONCEPT

DATE	8/11/2022
PROJECT NO.	FS000302_R102003_L1482.dwg
DESIGNER	CLEW
CHECKER	CLEW
DATE PLOTTED	8/11/2022
SCALE	AS SHOWN
SHEET NO.	18



PARKING AREA 2 CONCEPT
NOT TO SCALE



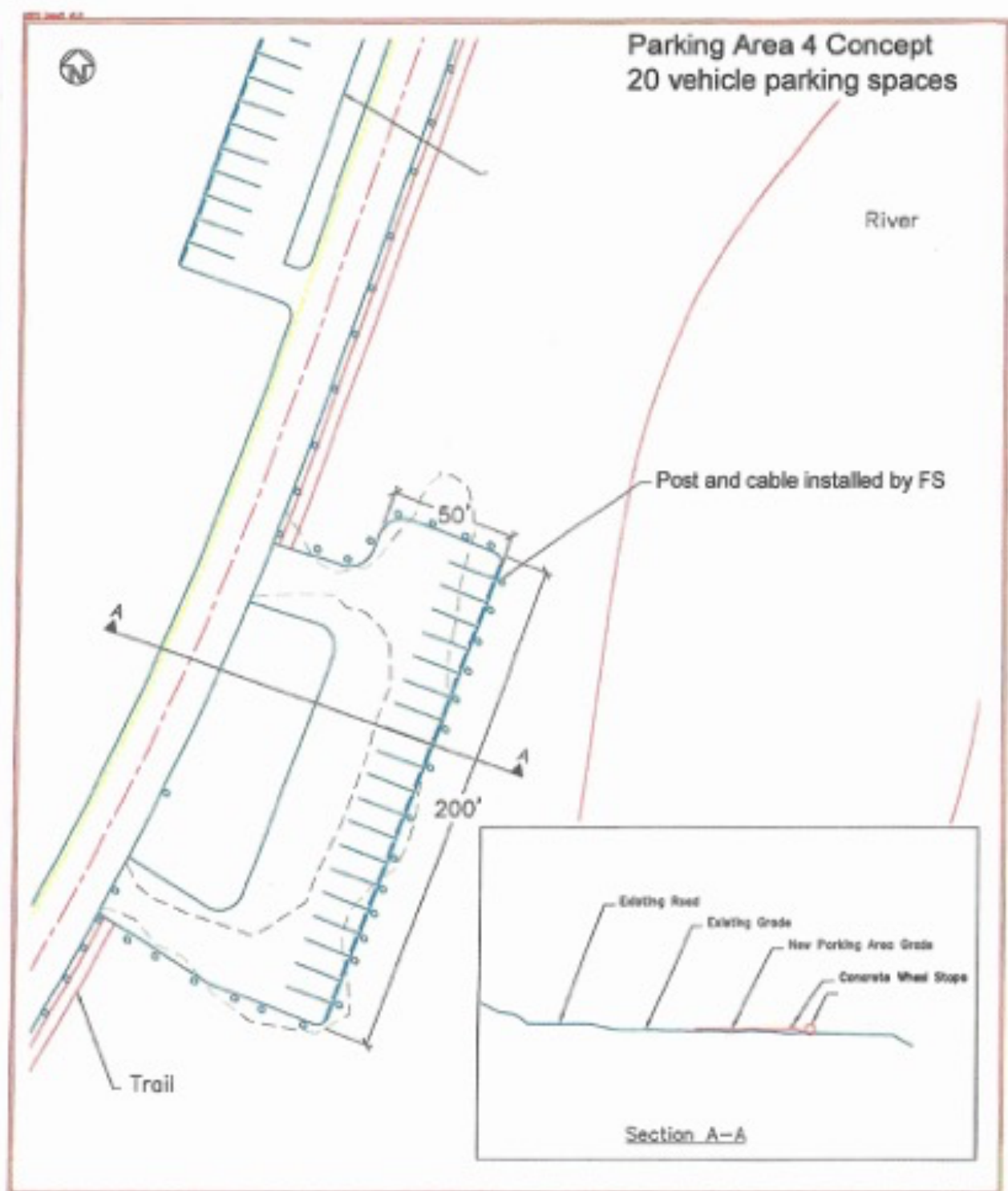
U.S. DEPARTMENT OF AGRICULTURE
FOREST SERVICE
R-2
ROCKY MOUNTAIN REGION



Drawn SJS
Design GM
Checked -
Reviewed -

Forest
PSICC
Project Name
HAPPY MEADOWS
PARKING AREAS

Sheet Title
PARKING AREA
Scale
NTS
Sheet 2
of 5



U.S. DEPARTMENT OF AGRICULTURE
FOREST SERVICE
R-2
ROCKY MOUNTAIN REGION

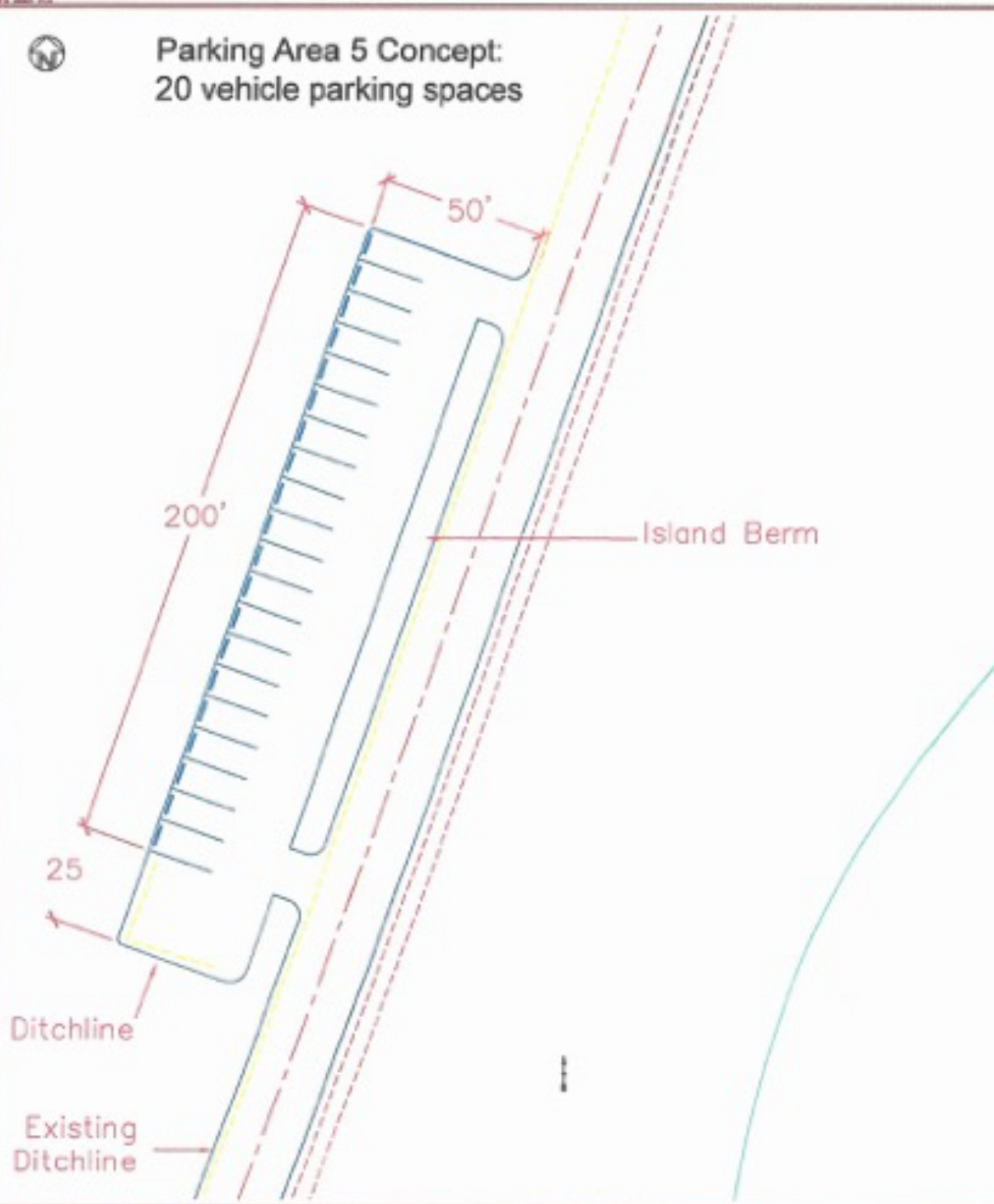
Drawn DJS
Design GM
Checked —
Reviewed —

Forest
PSICC
Project Name
**HAPPY MEADOWS
PARKING AREAS**

Scale
NTS
Sheet **5**
of **5**



Parking Area 5 Concept: 20 vehicle parking spaces



U.S. DEPARTMENT OF AGRICULTURE



FOREST SERVICE

R-2

ROCKY MOUNTAIN REGION

Drawn **DJS**
Design **CM**
Checked **—**
Reviewed **—**

Forest
PSICC

Project Name
**HAPPY MEADOWS
PARKING AREAS**

Sheet Title
PARKING AREA 5

Scale
NTS

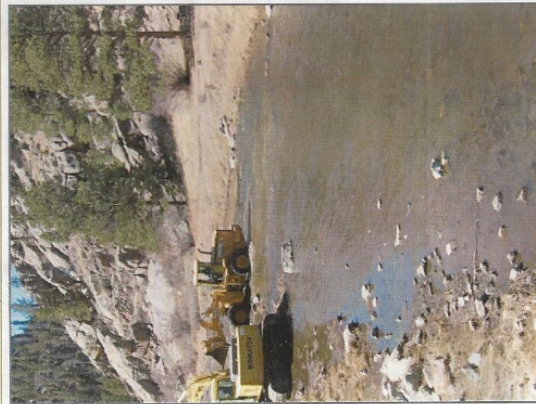
Sheet **5**
of **5**

Appendix 5

CUSP Equipment Cleaning Standards

CONSTRUCTION EQUIPMENT CLEANING STANDARDS

FOR MORE INFORMATION CONTACT
COALITION FOR THE
UPPER SOUTH PLATTE
PO BOX 726
LAKE GEORGE, CO 80827
719-748-0033
CUSP@CUSPWS



CLEANING EQUIPMENT

A seemingly unavoidable consequence of restoration and construction activities is the disruption of established soils, slopes, and native plants and the unnecessary spread of invasives; however, cleaning your equipment can greatly reduce the chance of invasive spread. If your equipment does not meet the standards, it will not be allowed to enter a project site until properly cleaned.



WHAT TO EXPECT PRIOR TO WORKING WITH CUSP

Before any equipment will be allowed on site, CUSP and/or CUSP partners will inspect all equipment intended to be used on a project. If equipment does not meet the standards as described within this guidance document, equipment may need to be cleaned further before work will commence.



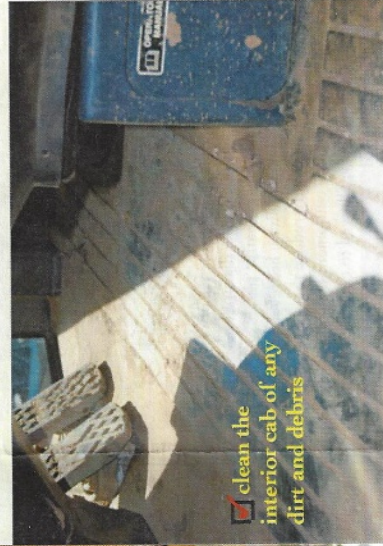
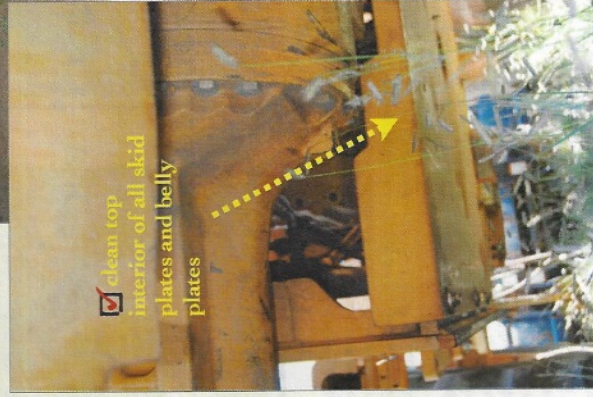
PREVENTING INVASIVE SPECIES SPREAD

- All equipment and trucks shall be washed with a high-pressure, steam-cleaning device prior to entering the project area to reduce the spread of noxious weeds and/or invasive waterborne organisms from other projects and areas. There should be *no* remaining mud or dirt caked on the equipment. Make sure mud and debris is cleaned from tracks, turrets, buckets, drags, teeth, etc. CUSP crew will inspect equipment prior to use. Cleaning shall be repeated if moving from one area to another.
- Cleaning sites need to be approved by the CUSP project manager, but must be established so as to minimize the introduction of invasive species.
- If equipment will be working in live water, additional cleaning is required to reduce the movement of waterborne invaders such as the New Zealand mud snail. Once cleaned of mud and debris, equipment shall either 1.) be sprayed/soaked with a 1:15 solution of Sparquat institutional cleaner and water. Keep equipment moist for ten minutes. OR 2.) be sprayed/soaked with water greater than 140° F for at least ten minutes. When working in and around water, clothing, boots, tools and other items used in and around the water shall also be cleaned in hot water (>104 degrees) or soaked for 20 minutes in 100% vinegar.
- Machine operators must avoid driving through any excessively weedy areas and will notify CUSP program staff of such locations if they have not already been mapped and marked by CUSP staff.
- All seed mixes, plants, straw, and hay materials used in revegetation must meet Colorado Weed-Free specifications.

Construction Equipment Cleaning Standards

MAKE SURE TO CLEAN YOUR EQUIPMENT FOLLOWING THESE GUIDELINES

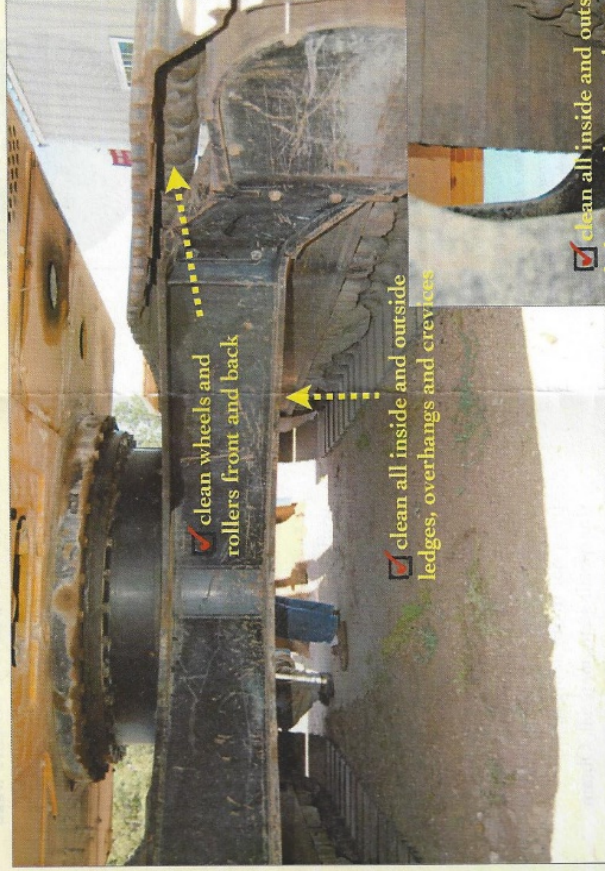
- ☒ Loosening caked-on mud and debris with hand tools such as a wire brush and paint may be required
- ☒ Remove mud, dirt and plant debris before mobilizing equipment
- ☒ Clean equipment with high pressure washer
- ☒ Clean all tracks or tires
- ☒ Clean top interior of all skid plates and belly plates
- ☒ Clean any pivot points where dirt or debris could be lodged
- ☒ Ensure that excessive grease is removed
- ☒ Clean the interior cab of any dirt and debris
- ☒ Clean all cutter wheels or teeth
- ☒ Trailers used for transporting equipment will also be inspected before entering work sites
- ☒ Call CUSP if you have any questions!



Construction Equipment Cleaning Standards

MAKE SURE TO CLEAN YOUR EQUIPMENT
FOLLOWING THESE GUIDELINES

- ☒ Clean wheels and rollers front and back
- ☒ Clean all inside and outside ledges, overhangs and crevices
- ☒ Clean bucket



☒ clean all inside and outside ledges, overhangs and crevices

