

Collaborative Forest Action





Federal

State

Regional

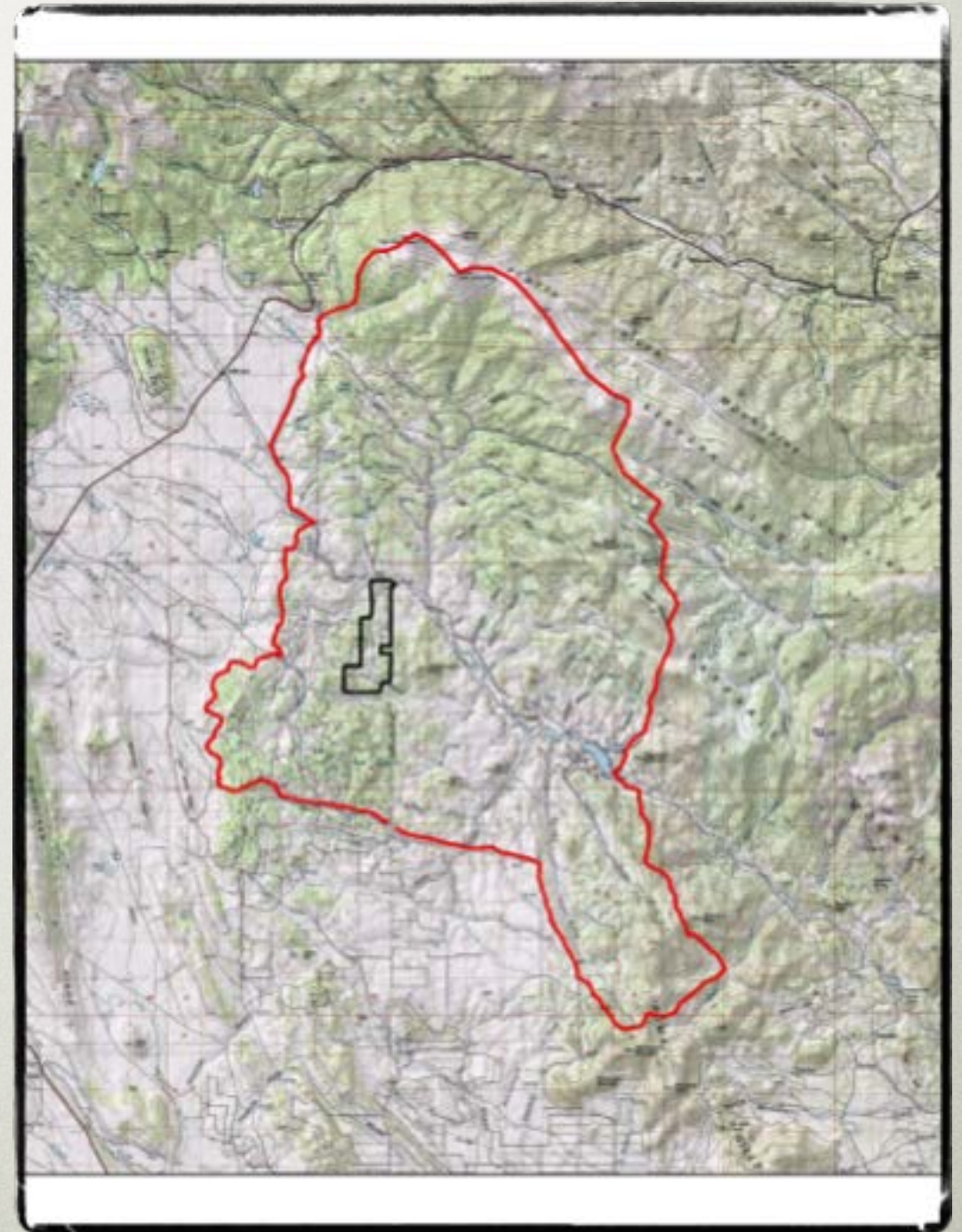
Local

HOA

Individual

CUSP Led Forestry Programs

- **Planning**
 - CWPP's
 - Forest Management Plans
 - Mapping
 - Funding
- **Implementation**
 - CUSP Fuels Crew
 - Contractor Projects
 - Youth Corps and SWIFT
- **Utilization**
 - Fairplay Sort Yard
 - Logs to Mills
 - Firewood
 - Mulch for Reclamation, and Landscape supply

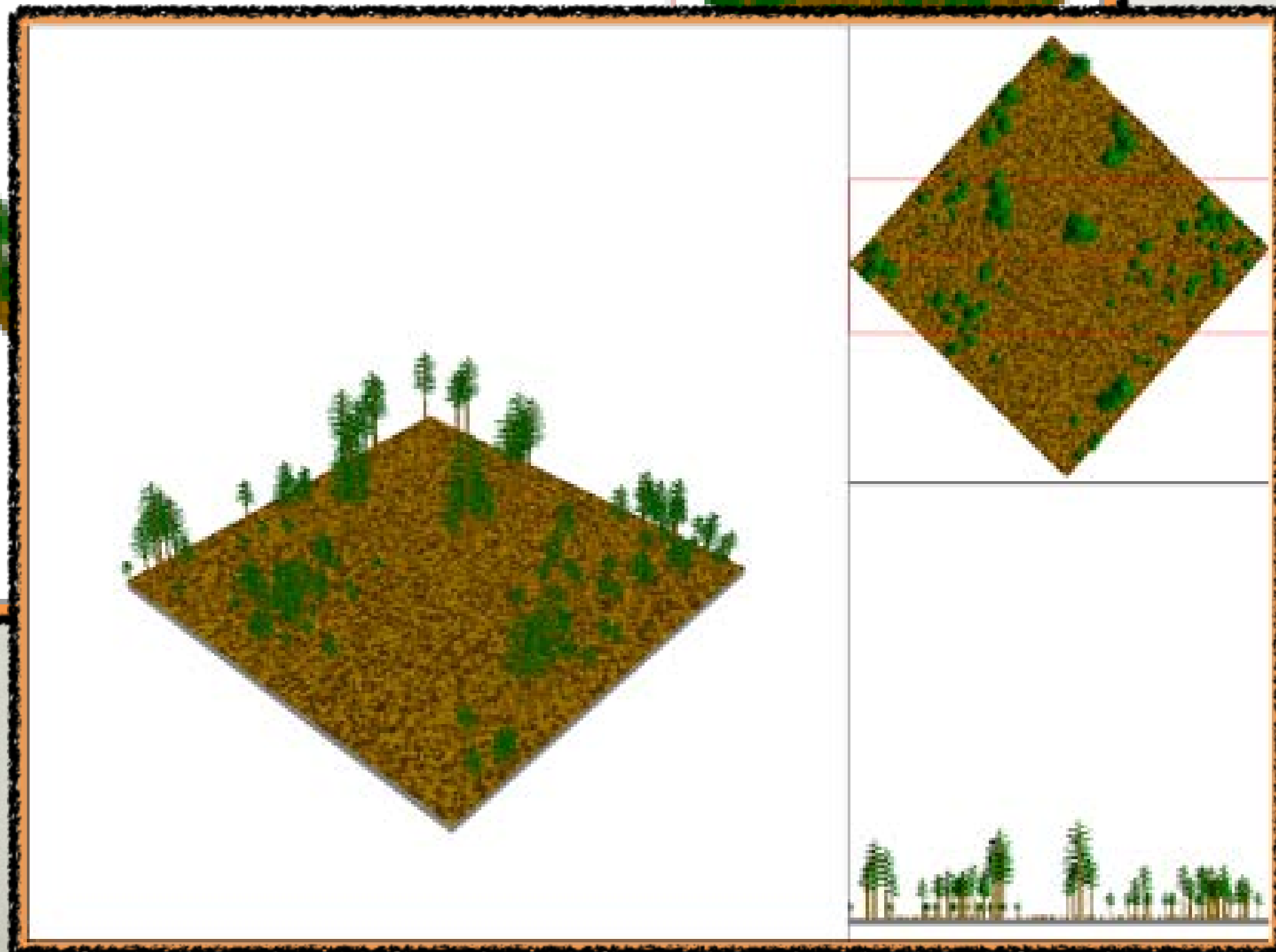
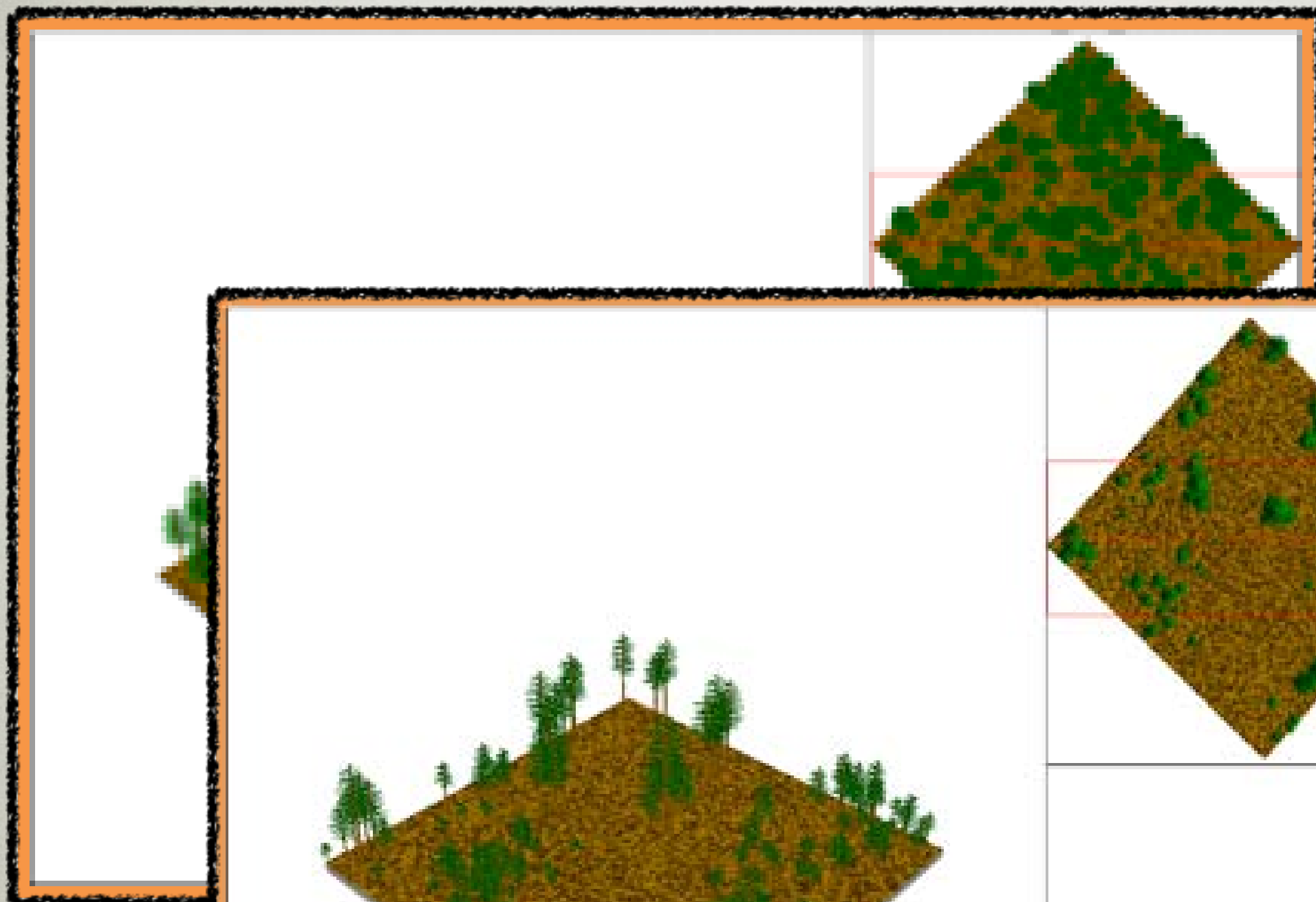


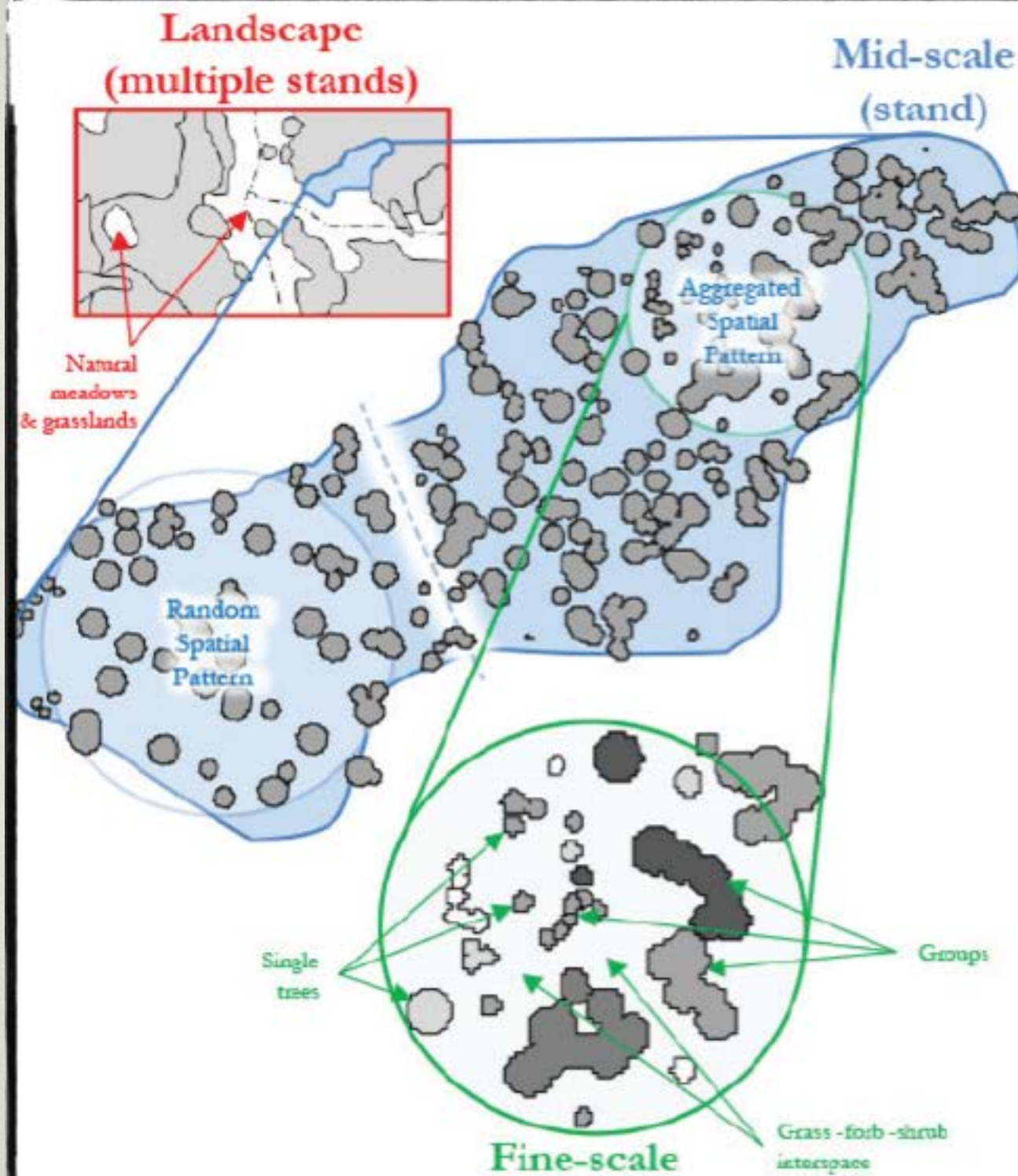






Neighbors Helping
Neighbors









WHAT HAVE WE LEARNED?

Understand the **current and future conditions** by using the best available science.

Be as inclusive as possible – (All projects can easily be derailed by one person who does not support the project).

Be willing to **adapt and to change**

Set realistic project **goals** – What are the **objectives**? (Small achievements are just as important as the large ones) A plan of action must be designed, articulated and presented to the KEY stakeholders.

Get Creative with the **Funding** – look for unconventional sources - create networks of people who want to help and tell the story

Before #1



After #1













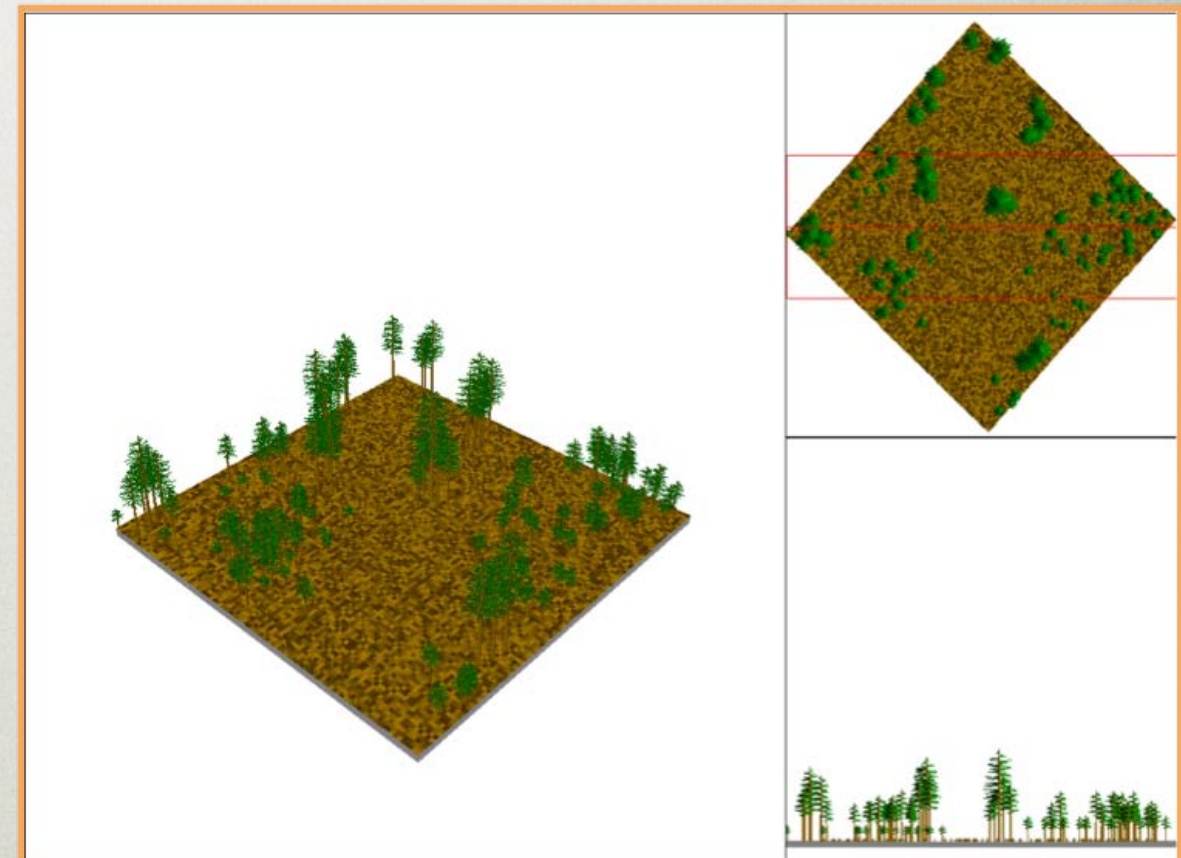
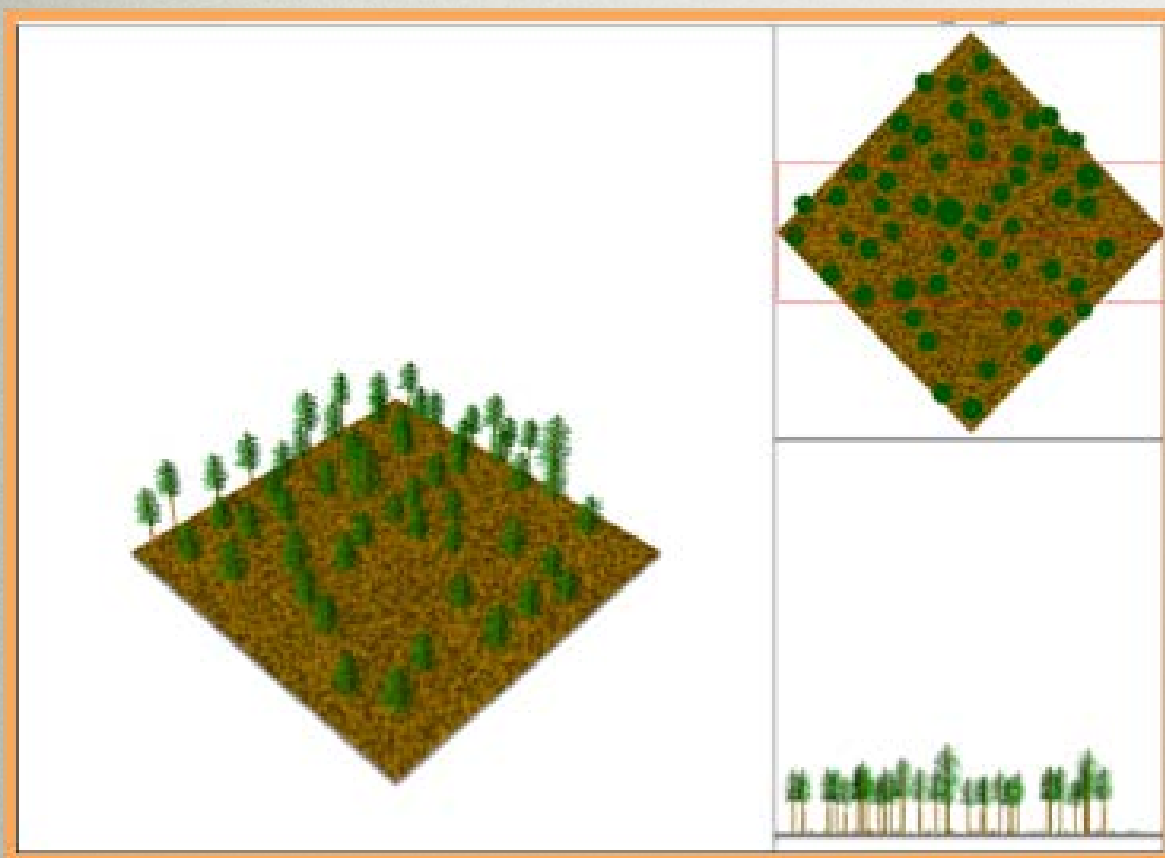
Forestry BMPs

- Restoration of forest function and resiliency are necessary to meet multiple objectives
- Restoration and fuels reduction are compatible
- Utilize all the tools in the tool box
- Utilize a sliding scale methodology for treatments to ensure that treatments are acceptable economically, socially, and ecologically. Appropriateness of treatment standards is directly correlated to the location, forest type, and desired outcomes.
- Water and the land are inextricably connected. Treatments must protect the land and the water both from fire and other negative landscape impacts.
- Utilize as much material as possible considering the local context
- Utilize local contractors
- Be adaptive in the management, by being willing to adjust as new information is available

A Diverse set of Treatments is needed to reach Healthy Forest and Healthy Community Goals

Fuels Reduction

Forest Restoration





WE MUST MAINTAIN THE WISE USE OF FIRE



WHAT HAVE WE LEARNED?

Create realistic **timelines** – (A phased approach is essential when working toward a restored landscape).

Utilize **volunteers** where and when possible – (Ownership is not built by approving plans, but by getting dirty and working together).

Consider (and incorporate) **all of the components** of the project from day 1 (economies, property, safety, environmental processes, species, recreation, etc....).

Leadership, Leadership, Leadership



Jonathan Bruno

jonathan@uppersouthplatte.org